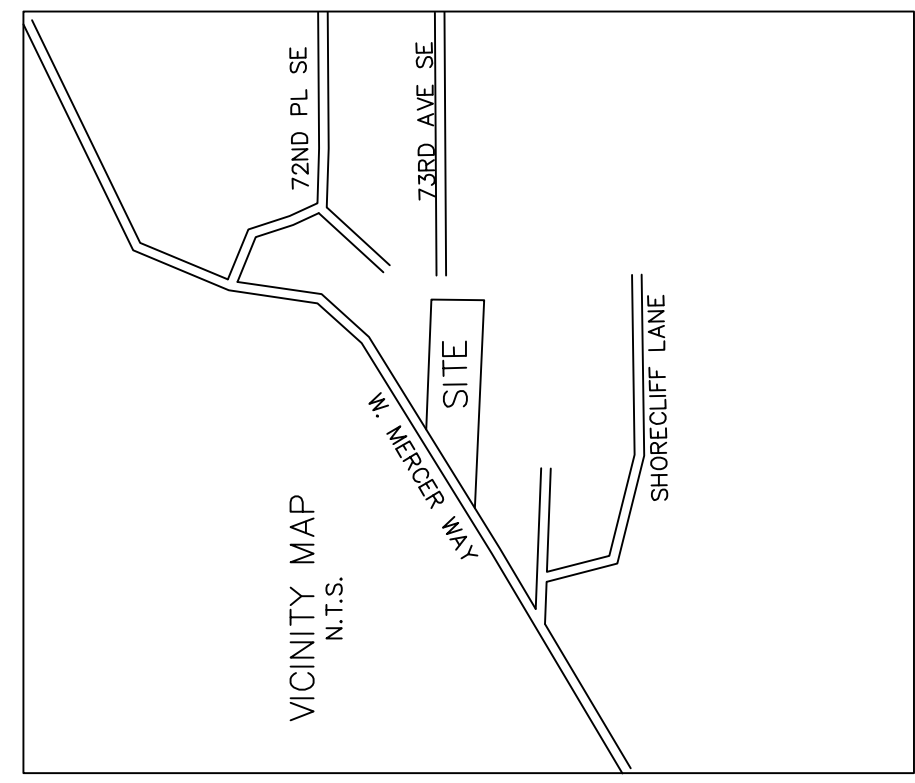
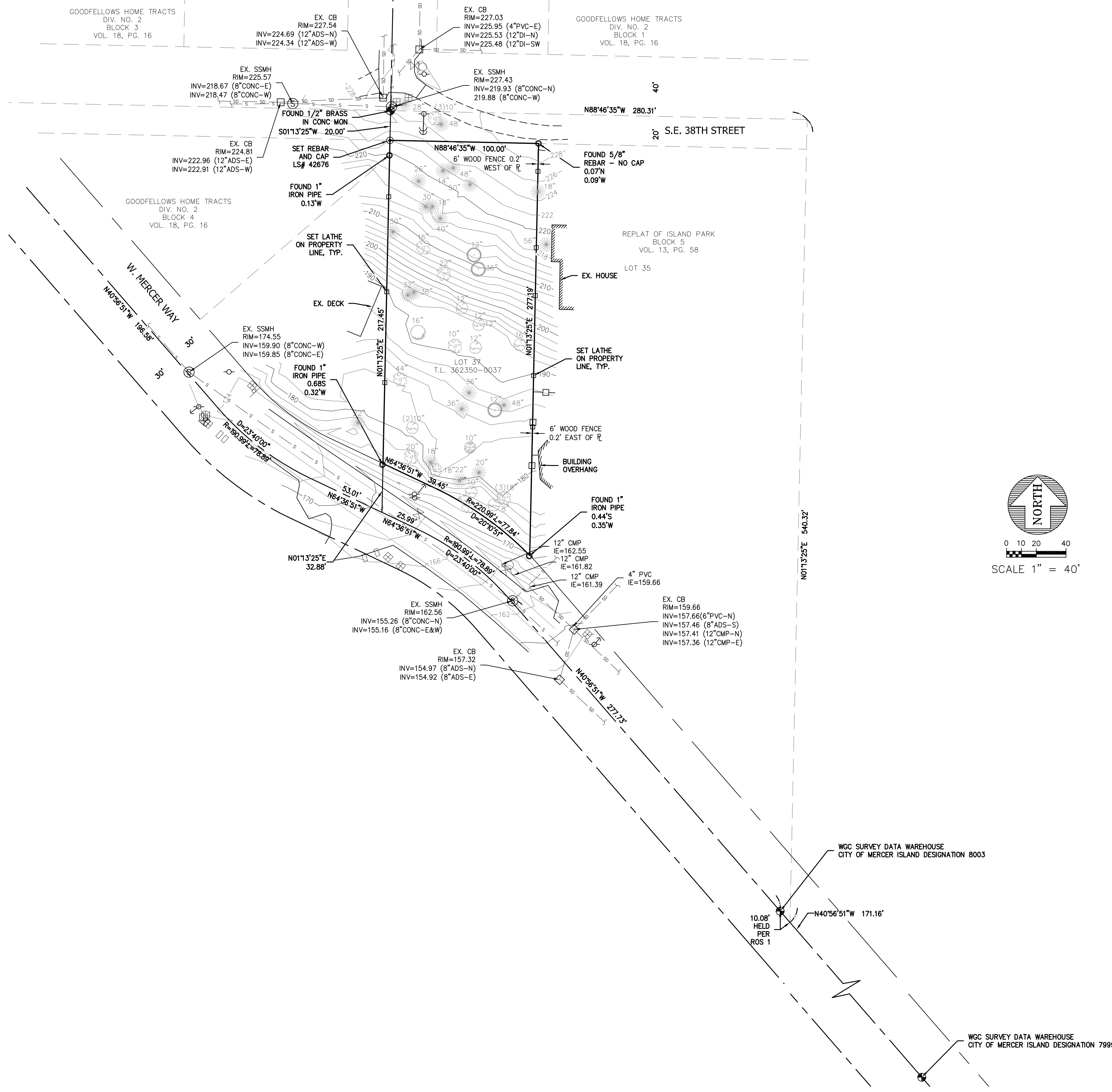


A PORTION OF THE S.E. 1/4 OF THE S.W. 1/4 OF SECTION 12, T.24N., R.04E., W.M.
MERCER ISLAND, STATE OF WASHINGTON



LEGAL DESCRIPTION
THE WEST ONE-HUNDRED (100) FEET OF TRACT FIVE (5)
(MEASURED ON THE NORTH LINE THEREOF), REPLAT OF
ISLAND PARK ACCORDING TO THE PLAT THEREOF RECORDED
IN VOLUME 13 OF PLATS, PAGE 58, RECORDS OF KING
COUNTY, WASHINGTON;

TOGETHER WITH THAT PORTION OF ISLAND AVENUE VACATED
BY KING COUNTY COMMISSIONER'S ADJOINING.

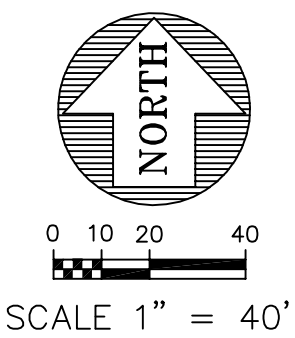
DATUM
NAVD 88

BENCHMARK
WGS DESIGNATION 8003
3/8" COPPER PIN IN 4" SQUARE CONCRETE MONUMENT,
DOWN 1.1', LOCATED ON MERCER WAY 182 FEET NORTHWEST
OF THE INTERSECTION WITH S.E. 40TH STREET
ELEVATION=143.51

HORIZONTAL DATUM
NAD 1983/91

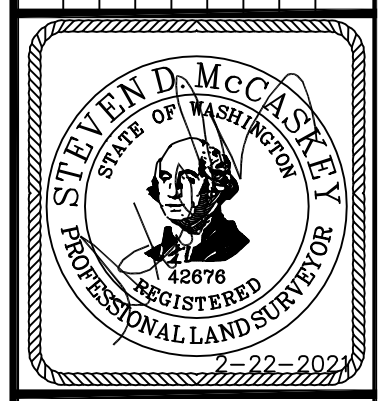
HORIZONTAL CONTROL
HELD LINE BETWEEN WGS SURVEY DATA POINT 8003 AND
WGS DATA POINT 7999
IE=N40°56'51"W

INSTRUMENTATION
INSTRUMENT USED: 5 SECOND TOTAL STATION,
FIELD SURVEY WAS BY CLOSED TRAVERSE LOOPS, MINIMUM
CLOSURE OF LOOPS WAS 1:22,000, IN ACCORDANCE WITH
WAC 332-130-090.



- LEGEND
- ☐ WATER METER
 - ⊗ WATER VALVE
 - ⊙ FIRE HYDRANT
 - ⊕ GAS VALVE
 - ☐ MAILBOX
 - UTILITY POLE
 - ⊗ GUY ANCHOR
 - ☐ CATCH BASIN
 - ⊙ SEWER MANHOLE
 - ⊕ SIGN
- TREE LEGEND
- ⊙ MAPLE TREE
 - ⊙ COTTONWOOD TREE
 - ⊙ ALDER TREE
 - ⊙ MADRONA TREE
 - ⊙ TREE (UNSPECIFIED)
 - ⊙ FIR TREE

REVISIONS	BY	DATE



PAUL BOSVELD
BOUNDARY/TOPOGRAPHY SURVEY

Encompass
ENGINEERING & SURVEYING

Western Washington Division
165 NE Juniper Street, Suite 201 • Issaquah, WA 98027 • Phone: (206) 392-0250 • Fax: (206) 391-3055
Eastern Washington Division
108 East 2nd Street • Clk Elum, WA 98922 • Phone: (509) 674-7433 • Fax: (509) 674-7419

JOB NO.	15605
DATE	02/22/21
SCALE	1" = 40'
DESIGNED	SDM
DRAWN	JEF
CHECKED	SDM
APPROVED	SDM